



# ***Equipment Catalogue 2017/2018***

 **1300 WE HIRE**

| [www.premiairhire.com.au](http://www.premiairhire.com.au)



Premiair Hire are the equipment/solutions hire specialists of diesel and electric air compressors, dryers and filtration, skid and trailer mounted silenced generators, lighting towers, traffic management equipment and sustainable event solutions.

Premiair also has an on-site service division & mobile service vans committed to scheduled servicing and emergency response 24 hours a day, 7 days a week.

We also have an expanding fleet of fuel trucks driven by a dedicated team, to deliver onsite diesel refuelling, servicing a range of equipment wherever and whenever needed.

With branches located in New South Wales, Australian Capital Territory, Queensland, Victoria and South Australia, Premiair Hire can effectively service the entire east coast of Australia.



Premiair Hire officially commenced trading in 1994 (then known as Premiair Compressor Services), operating from a milking shed in Richmond, in Sydney's North West.

In its humble beginnings, owner/operator Peter Xiberras, an air compressor technician by qualification, took on his aspirations to go into business by investing into one truck, a box of tools....and on the road he went!

In the years to follow, Peter's passion to succeed and his tireless commitment to quality workmanship, presentation and unrivalled customer service was to become the golden formula for success.

With success obviously came growth, and Premiair outgrew 3 facilities, progressed from a staff of 1 to 80, and expanded their product offering to include Compressors, Generators, Lighting Towers, VMS boards, Traffic Management Equipment and more.

This expansion also produced HIRE, SALES, SERVICE & SUPPLY divisions driven through all branches.

The now known & industry reputable formula is a reflection of the business as it stands today and is certainly at the forefront of the direction of the company moving forward.



# PremiAir Hire

## Compressors



*With over 25 years of hands on experience coupled with the best people in the business, we know Air. PremiAir can tailor any air solution, diesel or electric, standard pressure to extra high pressure, towable, truck or skid mounted.*

*We have the equipment, knowledge and the experience to match the right air solution to any application!*

## Standard Pressure – Diesel Compressors



Compressor Flow		Pressure	
CFM	Litres/Sec	PSIG	Bar
185	87	116	8
260	123	116	8
425	200	116	8
850	400	116	8
1050	542	116	8
1150	546	125	8.5
1500	708	116	8
100% Oil Free			

**Note:** Accessories are available for these products.

## Medium Pressure – Diesel Compressors



Compressor Flow		Pressure	
CFM	Litres/Sec	PSIG	Bar
400	189	200	14
425	200	150	10
750	354	175	12
900	425	150	10
1600	755	150	10

**Note:** Accessories are available for these products.

## High Pressure – Diesel Compressors



Compressor Flow		Pressure	
CFM	Litres/Sec	PSIG	Bar
816	385	294	20
900/1150	200	500	35
COMBO	542	350	25

**Note:** Accessories are available for these products.

## Electric Compressors



Size	Pressure Range
2.2 kW / 3 hp to 315 kW / 420 hp	8 Bar / 10 Bar / 13 Bar / 15 Bar / 20 Bar / 25 Bar

**Note:** Accessories are available for these products.

## Compressor Accessories



Description
3/4 Inch (19mm) Hose
2 Inch (50mm) Bull Hose
Filtration Packs (10 CFM to 5000 CFM)
Air Jack Hammers – 10kg
Air Jack Hammers – 40kg
Air Blowpipes

## Refrigerant Dryers



Flow	Pressure	Dewpoint
10 CFM to 2000 CFM	7 Bar to 16 Bar	2 °C to 4 °C

## Desiccant Dryers



Flow	Pressure	Dewpoint
50 CFM to 5000 CFM	7 Bar to 24 Bar	-40 °C

### Features

- Dewpoint of minus 40 or better
- Dryers fitted with after cooler or heat exchanger
- Large dryers fitted with pressure regulators
- Post filter to catch desiccant dust fitted to selected models
- Large dryers have an incorporated purge air muffler system
- Dryers fitted with pre filters
- Mounted in a skid / lifting frame
- Fully pneumatic – safe for critical area placement
- All dryers matched up to our after cooled compressors
- 24/7 support

# PremiAir Hire

## Generators



*Our experience with generators is something you can count on.*

*We offer a variety of configurations, including trailer mount, skid mount & 20ft containerised sets, super silenced, synchronising capability, BMA & MDG15 Mine specified units. No matter what your needs or applications, PremiAir will have a solution to meet your demands.*

## Silenced Inverter Series Generators



Description	kW	Noise Level (at 7m) dB
3 kVA Yamaha	2.4	53
6 kVA Yamaha	4.8	58
6 kVA Roll Type	4.8	78
6.5 kVA Honda	5.2	52
7 kVA Honda	5.5	52

**Note:** Accessories are available for these products.

## Welder - Generators



Description	kW (Aux Power)	AMP (Welding)
300 Amp Welder / Generator	12	300
480 Amp Welder / Generator	12	480
600 Amp Welder / Generator	5.5	600

**Note:** Accessories are available for these products.  
Trailer mounted welder generators also available.

## Trailer Mounted (Silenced) - Generators



Description	KW	AMP
10 kVA Trailer Mounted	8	14
20 kVA Trailer Mounted	16	28
30 kVA Trailer Mounted	24	42
37 kVA Trailer Mounted	34	53
50 kVA Trailer Mounted	40	70
80 kVA Trailer Mounted	64	112

**Note:** Accessories are available for these products.

## Portable and Skid Mounted Generators



Description	KW	AMP
10 kVA	8	16
13 kVA	10	18
20 kVA	16	27
30 kVA	24	42
37 kVA	34	53
50 kVA	40	70
65 kVA	52	90
70 kVA	56	98
80 kVA	64	111
100 kVA	80	140
125 kVA	100	175
150 kVA	120	210
195 kVA	156	271
270 kVA	216	376
350 kVA	280	490
410 kVA	360	574
550 kVA	440	770
810 kVA	600	1134

**Note:** Specific mine and event spec units available upon request.

Long range generators available for selected products.

## Whisper Series Generators



Description	KW	AMP
150 kVA	120	210
200 kVA	160	280
300 kVA	240	420
400 kVA	320	560
500 kVA	400	700
800 kVA	640	1120
1250 kVA	1000	1750

**Note:** Accessories are available for these products.

## Generator Accessories



Description
Single Phase Leads (10 Amp / 240V)
Single Phase Leads (15 Amp / 240V)
Three Phase Leads - (32 Amp)
Three Phase Leads - (50 Amp)
Cable sets - (35mm - 240m) [four core and earth]
Single Distribution Board
3 Phase Distribution Board
Cable Covers (2 & 5 Cable Units)
Powerlock Cable Sets
Joiner Boxes



## *Lighting Towers*

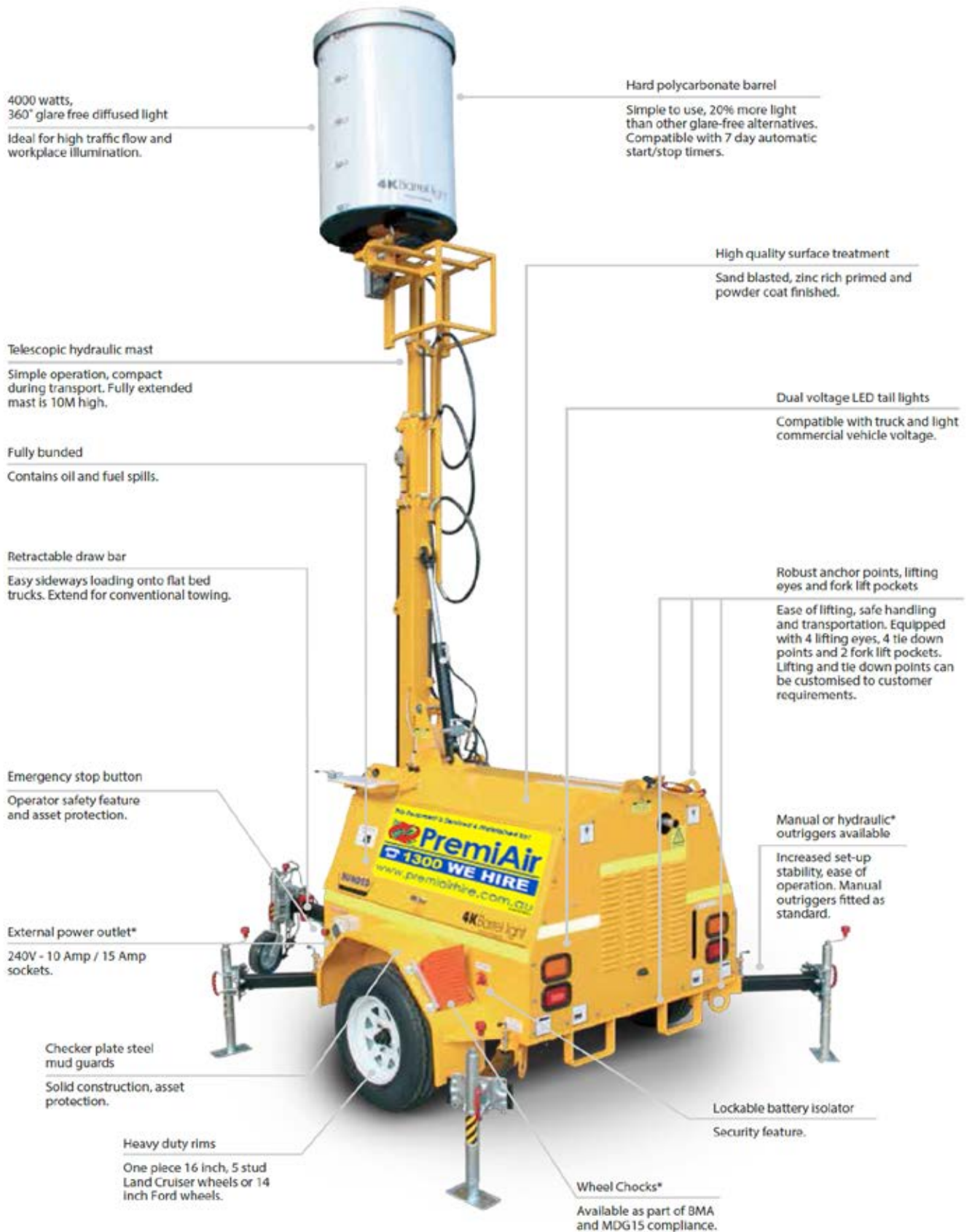


*Our urban style lighting towers are compact in size, making them one of the most cost effective transportable lighting towers in the marketplace.*

*Quiet at 60dB @ 7 metres and fuel efficient, running continuously for 85 hours on a single tank, ideal for use on all construction and civil projects.*



## Portable Lighting Unit - (Barrel Light)



## Portable Lighting Towers



### Description

Portable Street Pole Lighting (Concrete Block Mounted)

Directional Lighting Tower - 4000w (Skid Mounted)

Directional Lighting Tower - 6000w (Mine Spec)

Directional Lighting Tower - 8000w (Mine Spec)

Directional Lighting Tower - 9000w (Mine Spec)

Balloon Lighting Tower - 3000w

Barrel Lighting Tower - 4000w

LED Lighting Tower - 1200w

Fluorescent Lighting Tower - 4000w

Directional Lighting Tower - 4000w

Solar Powered Lighting Towers







## Traffic Solutions



*PremiAir Traffic Solutions is an integral part of our business. Our electronic traffic equipment range has set the benchmark with preferred hire agreements in place with a number of local and state government authorities in both NSW & QLD, meeting all regulatory requirements and Australian Standards.*



## Full Colour LED Video Board



Our mobile LED video sign is an ideal solution for:

- Hi impact Advertising
- Direct marketing to customers around the clock
- Perfect for:
  - ✓ Store openings
  - ✓ Product launches
  - ✓ Promotional Sales
  - ✓ Special Events
  - ✓ Live TV Events.
  - ✓ Trade Days

### Key Features

- Full colour LED video display
- Resolution 240 X 160 10mm pitch
- 3G modem for remote programming
- Automatic brightness control
- High Brightness >7000 nits (cd/m<sup>2</sup>)
- Wheel chains / security locks
- GPS location tracking
- Optional on board generator

### Specifications

- Viewing angle 110° horizontal 60° vertical
- Viewing distance 5m – 100m.
- Hydraulic mast height adjustment
- Average power consumption 700W
- Maximum power consumption 2200W
- Powered by mains 240V 10A
- Onboard Industrial PC
- Display size(2400mm X 1600mm)
- Trailer Size (L X W X H):
  - Stowed 3600mm X 2000mm X 2580mm
  - Extended 3600mm X 2730mm X 3880mm

### Software Features

- Web based content management
- Wide range of supported file types:
  - Video (AVI, MPEG, WMV, MP4)
  - Image (BMP, JPG, PNG, GIF)
- Program Scheduling

## Variable Message Sign (VMS)



### Description

VMS – Type A - 200mm Font - (Amber)

VMS – Type B - 320mm Font - (Amber)

VMS – Type C - 400mm Font - (Amber)

VMS – Type C - 400mm Font - (Colour)

Speed Advisory Sign

**Note:** Accessories are available for these products.

### Features

- **Ability to communicate with Variable Message Signs remotely using Mobile (3G) SIM card:**
  1. WebVMST™ from your favourite web browser
  2. SMS from your mobile phone
  3. PC using the VMS designer software
  4. STREAMS - used by Government Road Authorities
- **Locally at the Sign:**
  1. VMS COMPUTER, when fitted to sign
  2. PC connection using the Data Signs' VMS designer software
- **All Electronic Traffic equipment is fitted with GPS tracking devices**
- **All our Variable Message Signs meet the regulatory standards as specified by the RMS:**
  1. The Australian Standard AS 4852.2 – 2009 Variable Message Signs Part: 2, Portable Signs
  2. The RMS Specification No:P3104A [April 2008] Technical Specification for the Hire of Trailer Mounted Portable, Solar Powered Variable Message Signs [VMS]
  3. RMS Guideline S: PN028/G Guidelines for the Location and Placement of Variable Signs. TDT 2005/02a June 2006
  4. TDT 2008/01 use of Portable Variable Message Signs with Radar Speed Indicators.
  5. All of PremiAir Hire fleet is equipped with Global Positioning System [GPS]
  6. Three modes of communication, SMS, manual, PC laptop [modem]



#### Pan, Tilt and Zoom Camera

- Our PTZ camera system is an option that allows you to remotely view live footage of the road environment and other conditions wherever the variable message sign is placed
- The camera video footage is viewed through the internet using the Internet Explorer web browser.
- All pan, tilt & zoom capabilities can also be controlled from this web browser.



#### VMS Speed Radar

- World's smallest and lowest power usage OEM K-Band doppler radar at 0.10 watts.
- 150m typical pickup range for a compact vehicle.
- FCC pre-approved with CE mark.
- Wide input operating range allows solar operation.
- 100% self-test feature built-in including self power usage.



## Portable Traffic Lights

**Features**

PremiAir Hire offers you the most reliable and cost-effective portable traffic light system on the market.

Our solar portable traffic signal systems comply with the Australian standard [AS4191-1994 Portable Traffic Signal Systems and Various State Road Authority Specifications].

Portable traffic signals are used where temporary control of vehicular traffic is required, such as at road or bridge works. It provides two main forms of control via shuttle control and plant-crossing control.

The equipment is comprised of two electronic controllers known as "MASTER" and "SLAVE" mounted in a trailer unit that is capable of being split with each unit being positioned separately on the work site.

New controller technology also allows for multiple set functions, capable of running 1 - 4 way traffic control.

The dual-trailer system allows the trailers to be connected together so that it can be towed as one individual unit. This capability allows the system to be towed to the job site using one vehicle.

The Portable Traffic Signals are capable of operating under manual or automatic control and each separate unit is fully self-contained and powered by battery with a solar charging system. The fully lockable steel enclosure protects the controller and batteries from the elements and vandalism.

## Portable Traffic Lights - Accessories



### Radio Remote

The water-resistant remote control lets you operate the system up to 1km (LOS) from the master control and features an LCD display. The unit operates up to 8 hours on an internal rechargeable battery.

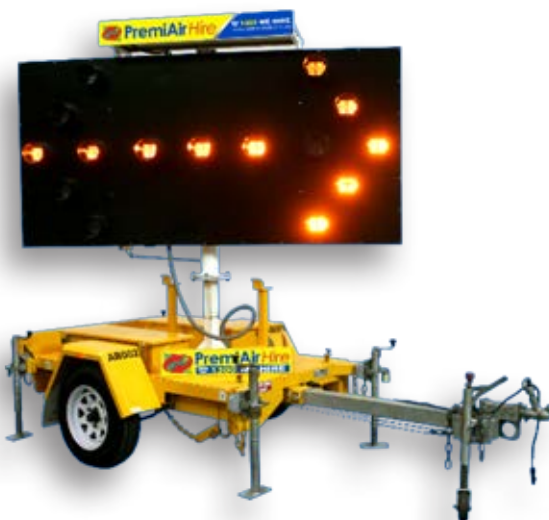


### Vehicle Detectors

Our radar vehicle detector is designed to be mounted near the red aspect of the traffic signal lantern pointing towards the oncoming traffic. The detector has a single zone of detection stretching from the radar to typically 60m along the carriageway. The detection zone is such that only vehicles approaching the detector are detected and vehicles travelling away from the detector are ignored.

**Note:** We also provide long range Hi-Gain Antennas. Call us for more information.

## Directional Arrow Boards



### Description

- Designed and manufactured to Australian standard [AS 4192-2006], illuminated flashing arrow signs.
- Fully solar powered portable traffic control devices.
- Provides directional traffic instruction to improve road construction operations and vehicle traffic management.



## Concrete Barriers



Made from solid concrete, these F-Type and T-Lok barriers provide effective protection from construction sites along roads and building sites. They are rated for 80km/h protection and can be fitted with anti-gawk fencing.

	Type	Weight	Dimensions (L x W x H)
F-Type	3 Metre Barrier	2000kg	3 x 0.58 x 0.86 m
	6 Metre Taper (Approach Side)	2900 kg	6 x 0.58 m
	3 Metre Taper (Departure Side)	1750kg	3 x 0.58 m
T-Lok	3.6 Metre Barrier	2600 kg	3.6 x 0.6 x 0.81 m
	5.4 Metre Barrier	3900 kg	5.4 x 0.6 x 0.81 m

**Note:** Installation and removal service available upon request.

## Water Filled Barriers



These easy to transport water fillable barriers act as effective and maintenance free delineation devices for work zone protection and event crowd control. Both Triton and ArmorZone barriers are also rated for 50km/h to 70km/h (determined by state legislation) traffic zones. Optional anti-gawk fencing is available for the ArmorZone.

	KI 1000	Triton Barrier	ArmorZone
Length	2m	2m	2m
Width	0.58m	0.533m	0.45m
Height	1m	0.81m	0.87m
Weight (Empty)	32kg	65kg	50kg
Weight (Filled)	100kg	610kg	570kg
Rating	N/A	50km/h	50km/h

**Note:** Installation and removal service available upon request.

## Absorb 350 Crash Cushion

The Absorb 350 is a water-fillable, non-re-directive crash cushion which can be attached to concrete and steel barriers. NCHRP Report 350 – Test Level 2 certified. These crash cushions have been rated for up to 80km/h roads subject to specific risk assessment of site.

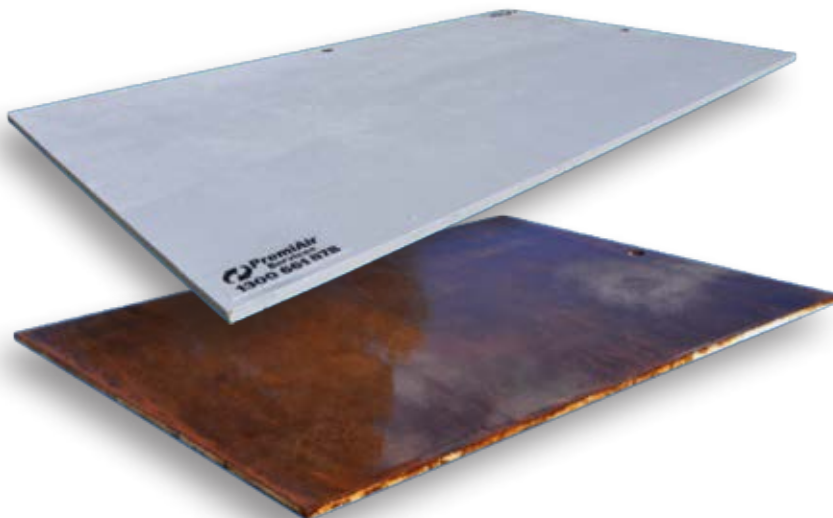


**Note:** Installation and removal service available upon request.

## Road Plates

Our large range of heavy duty steel road plates come in a variety of dimensions for any applications such as vehicle crossings, access paths and construction sites.

All sizes are available in natural steel finish, anti-slip (pedestrian) and anti-skid (vehicles).



Steel Plates	
Size (L x W x H)	Weight
2400 x 1200 x 28 mm	565 kg
2400 x 1800 x 28 mm	847 kg
3000 x 1200 x 28 mm	904 kg
6000 x 2400 x 28 mm	2830 kg
4000 x 1800 x 28 mm	1413 kg
3000 x 1800 x 32 mm	1356 kg
4000 x 1800 x 32 mm	1809 kg
3000 x 2400 x 28 mm	1415 kg

**Note:** Installation and removal service available upon request.  
Accessories are also available for these products.

## Road Plate Accessories

**Deck Pins**

Avoid any plate sliding with these easy to install deck pins for the corners of the road plate. Highly effective on uneven or inclined ground.

**Road Plate Lifter**

Effective way to install/remove road plates. These plate grabbers lock into a groove in the centre of the steel plate allowing for easy access when lifting.

## Barrier Accessories

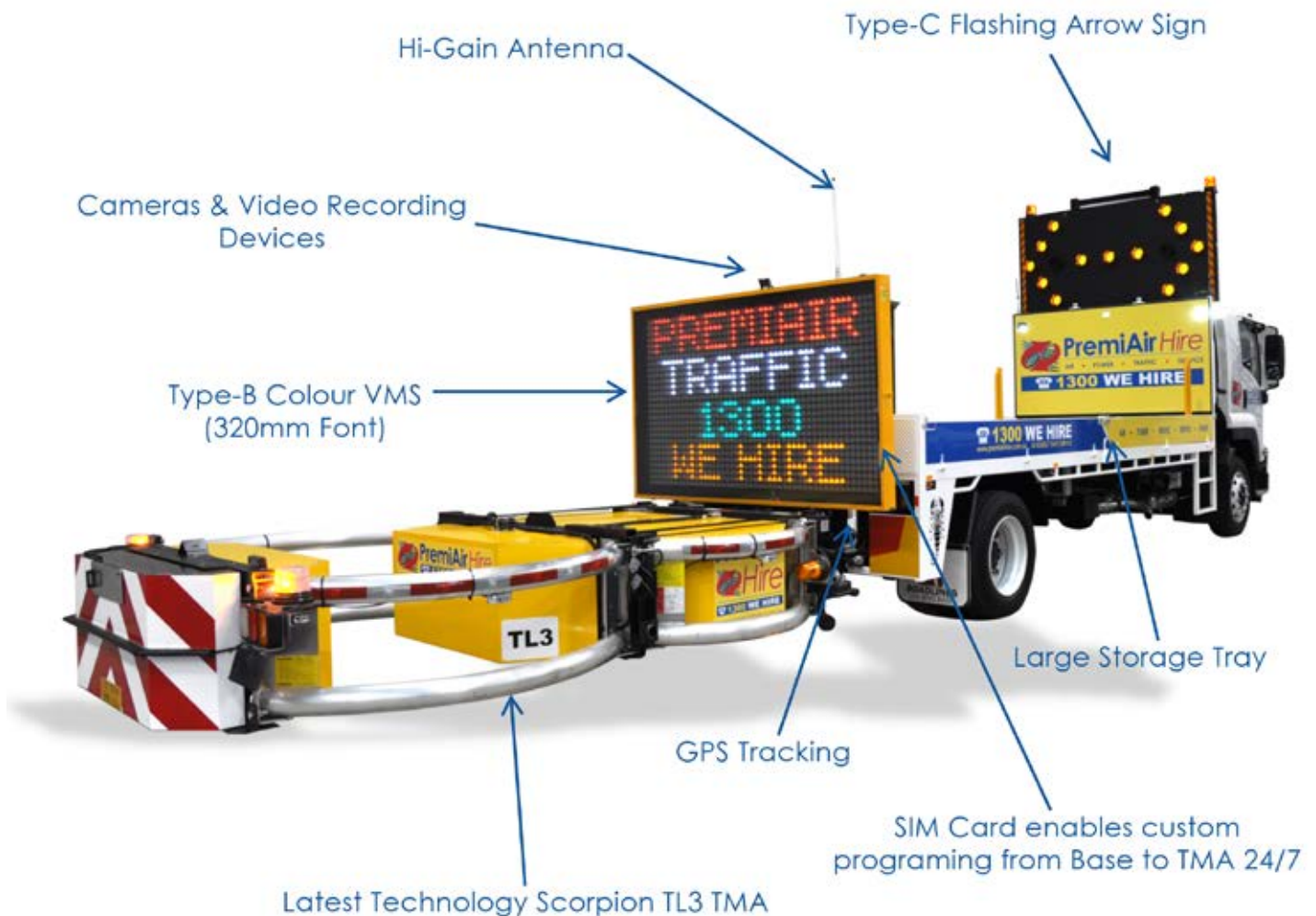
**Drain Plug Removal Tool**

Used for draining the ArmorZone water filled barriers. Allowing onsite drainage.

**Anti-Gawk Fencing**

Our anti-gawk fencing which mounts to F-Type, T-Lok and AmourZone barriers.

## Truck Mounted Attenuator (TMA)

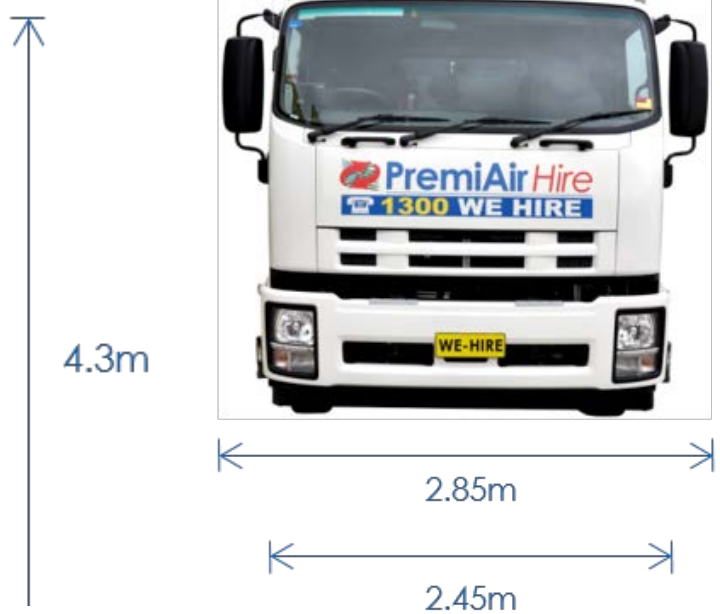


## Features

- Can be used in work zones up to 100km/h.
- PremiAir Hire's 15 tonne Truck Mounted Attenuators are manufactured to meet or exceed the highest specifications & standards in Australia (Australian TL-3 Standards).
- This enables our TMA's to be used in all states & territories nationwide.
- Our TMA's come complete with an Type-C arrow board, Type-B colour VMS, cameras, video recorder and the latest in honeycomb tube frame technology and crash impact braking, making them the safest TMA's on the market today.
- Additionally, our TMA control panel is mounted in front of the driver rather than to the side which enables much easier handling & a safer field of view.
- PremiAir Hire also provides customer training where necessary.



Truck Mounted Attenuator (TMA)



## Traffic Control Vehicle



### Features

- Latest model ute
- 4 x 2 Rear wheel drive
- Turbo diesel
- Air conditioning
- Power steering
- Reversing camera
- Reversing beeper
- Fire Extinguisher
- Automatic Transmission
- UHF Radio
- Automatic tilt directional arrow board
- Dual rotating safety lights
- Complete equipment cage for all road signage storage
- High visibility reflective tape fitted all around the tray
- External battery for arrowboard use



## Onsite Refuelling



**PremiAir Fuels** is a specialised division focused solely on reliable onsite diesel refuelling.

A dedicated team operate a fully equipped state-of-the-art fleet of tankers servicing the complete range of onsite diesel refuelling requirements - direct to your site.



### PremiAir Fuels

specialise in servicing the following industries:

*Civil Construction*

*Demolition*

*Mining*

*Marine*

*Rail*

*Power  
Generation*

*Earth Moving*

*Fleet & Transport*



### Onsite Refueling Solutions

PremiAir Fuels is fiercely focused on providing the best service in the industry. We only source and supply premium quality diesel and lubricant products to ensure your equipment is running at its best. Our ultimate aim is to save you time and money, allowing you to get on with doing what you do best.

Our prompt onsite refuelling services allow our customers to increase productivity, safety, convenience and reliability. Our concise delivery reporting systems ensure total control and security for your onsite diesel refuelling.

PremiAir Fuels can put together individual refuelling schedules to meet your specific requirements where you want it, when you want it – on time!



## Portable Fuel Tanks



### Fuel Tank

Our 400L and 900L portable fuel tank is a safe and practical option offering vast flexibility when transporting and refuelling diesel fuel. Can be fitted in utility vehicles, trucks, trailers and vans.

#### Featuring:

- Lightweight and extremely durable design.
- 12V Self Suction Pump (45L/min)
- 4m long hose
- Automatic Nozzle
- Complies with all relative certification
- Lockable lid.
- Metal lifting shackles
- Internal light
- Level indicator
- Suction tube with filter.

## Fuel Cells



### Self Bunded Fuel Cell

Our range of fuel cells are designed to meet the requirements of various industries including: transport, construction, civil and events.

#### Featuring:

- Lockable Access
- Fitted 12V dispensing system.
- Internally baffling on all tanks.
- Certified lifting corner brackets.
- Letterbox facility for fuel lines.
- Vandal proof access lid.
- 110% self bunded, steel in steel.
- Approved IBC to AS1692-2006
- Provision to supply up to 3 generators/pumps/compressors.
- Stackable design, 2 units high when full and 3 units high when empty.

Available in:

1,000L – 2,000L – 3,000L

## Bulk Storage Solutions



ONLINE TANK MONITORING AND CONTROL



GERMAN DESIGNED AND BUILT



PC SOFTWARE INCLUDED

### Bulk Storage

PremiAir Fuels has a range of liquitainer tanks designed to meet your specific needs.

Featuring:

- 110% Bundled double steel design
- Fuel management system integration and capabilities
- Overfill and spill prevention technology as standard
- Customisable calibrated dispensing systems
- AS1692-2006 + AS1940-004 certification approved
- Tank and fuel supply agreements available
- Bundled pump bay housing features removable side panels to allow multiple tank connection
- Interchangeable skid mounted pumping system

Available in:

6,000L - 110,000

## Fuel Trailers



### Fuel Trailers

Our 1,500L self bundled portable fuel trailers can be utilized for any purpose or application. With fully baffled tanks and heavy duty galvanised trailers, these tanks are ready to go anywhere, anytime.

Featuring:

- Lockable gas strut lid to fuel compartment
- Retractable 10m long pump hose
- Double suction & double return connection points
- Anti Static Fill Tube
- Heavy duty design
- Fitted with dispensing and metering apparatuses which run off 12V solar panels
- Mechanical brakes fitted for safe transport



# **PremiAir**events

## Event Specialists



**PremiAir Events** has a fast growing reputable name in the events sector, known as a stand out amongst competition for our reliability and prompt solutions.

Nation wide, our events division has the power to handle any event with a team you can count on!

We have worked with some of Australia's largest and most prestigious events, providing sustainable and reliable equipment.



SYDNEY  
GAY AND LESBIAN  
MARDI GRAS



DEFQON.1



MasterChef  
AUSTRALIA



Stereosonic



opera  
australia



EMINEM

THE AMAZING  
RACE

FIFA FanFest



## Testimonials

## Lisa Bates, National Logistics Manager Events | The Leukaemia Foundation

I just wanted to drop you a line to say thank you so much for your support of Light the Night. The events so far have been going incredibly smoothly, with lots of positive feedback and inspiring stories. Nationally, the fundraising total stands at \$1.3m, with more events to come and money still coming in. The feedback about your work in NSW was great. I found you and your staff really easy to work with and appreciate your efficient set-up and smooth operation on the evening. Particular thanks to yourself for accommodating our budgets, and making changes as required. I look forward to working with you again next year to Light the Night!



## Lea Hicks, Chair | Ozwac Board

The Board of OZWAC would like to sincerely thank you for your support by assisting us with 2 Message Boards for the Family Fun Day. The event attracted many people and we not only collected over \$3000 but significantly raised awareness of the Australian Women's and Children's Research Foundation and the wonderful research that we are able to support. Many thanks again for your support!



## FIFA, Fan Fest Darling Harbour

The Sydney Internations FIFA Fan Fest has been a great success with hundreds of fans coming to Darling Harbour to celebrate and support their team in the World Cup.

**FIFA FanFest**

PremiAir were selected to supply Generators, External Fuel Cells, Lighting Towers and Variable Message Boards. With two sites operating out of Tumbalong Park and Cockle Bay, we needed enough in ground power to run the event to power an array of food stalls, special effect lighting, site accommodation as well as backup requirements for the 5 giant screens, PremiAir were called upon to offer a power solution to run the entire site. Biodiesel run Generators ranging from 100kva to 350kva all linked to external fuel cells for continual use were supplied in 5 different locations. With one point of contact for the entire event, offering a sustainable hire solution as well as unequal equipment and expertise, PremiAir can claim another faultless event!

## Ann Maginness, Production Manager | The Amazing Race

On behalf of all the Amazing Race Team, I want to say an huge thank you for all your efforts, especially the incredible service shown in getting the generator to Hyde Park in record time.....

**THE AMAZING RACE**

not sure how you managed it, but I was certainly impressed! The Amazing Race is a production that has a life of its own and it's great to know that we have a supplier such as PremiAir who can meet & surpass the sometimes ridiculous demands we throw at you. Once again, many thanks and look forward to working with you again soon!



*No job out of reach with our range of forklifts from Manitou. Alongside our optional refueling division, these forklifts will have you staying productive for longer.*



### Description and Features

#### **MH125 – 4T:**

- Load Capacity: 2500 kg
- Weight (with forks): 4350 kg
- 3.3m Standard Lifting Height
- Fork Dimensions: 1100 x 100 x 40 mm
- Powered by a 4 cyl. 60 HP/44 kW Kubota Turbo Engine
- 4 Wheel Drive
- 14 km/h maximum travel speed
- Overall width of 1.45 m
- Overall height (mast lowered) of 1.99 m
- Overall length of 4.04 m.
- 260 mm ground clearance.
- 10° forward tilt and 12° backward tilt for mast.
- 3.265 m turning radius (including body)

#### **MX50-4:**

- Load Capacity: 5000 kg
- Weight (with forks): 7660 kg
- 3.7 m Standard Lifting Height
- Fork Dimensions: 1200 x 150 x 60 mm
- Powered by a 4 cyl. 95 HP/70 kW Perkins Turbo Engine
- 4 Wheel Drive
- 24 km/h maximum travel speed
- Overall width of 2.1 m
- Overall height (mast lowered) of 2.5 m
- Overall length of 3.75 (not including fork length)
- 360 mm ground clearance.
- 4.1 m turning radius.
- Mast 15° reclines both sides from vertical



# PremiAir*service*

## Service Department



**PremiAir Service** provides a fully equipped workshop and a multi-skilled set of technicians to perform maintenance and repairs to all equipment and vehicles as well as outside contracted work.

Alongside our extensive range of spare parts/products we also offer a 24 hour, 7 day comprehensive mobile breakdown service with a maximum 2 hour response time.



## Service Department

### Equipment Maintenance

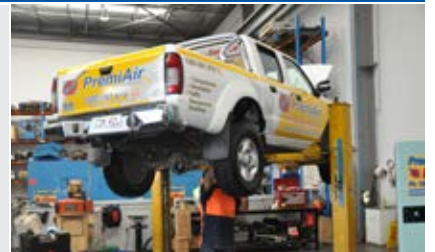
Our technicians at PremiAir provided and perform maintenance duties to all of our entire fleet of equipment. Every machine is scheduled for service every 250 hours to ensure that everything runs smoothly. We have electricians for testing and checking the various electrical components of all our equipment. Dryer technicians for air dryer applications, licensed mechanics and fitters ensuring each equipment's worthiness of hire.



### Vehicle Service

Our technicians not only service and maintain our equipment but also our vehicles which are thoroughly checked to ensure the safety of our deliveries and drivers on the road.

Our high standards are your guarantee for a safe and prompt response from our delivery and service vehicles anywhere, anytime!



### Paintshop

PremiAir's commitment to excellence and presentation is something which is evident in the quality of our finished products which leave our paint shop.

Our team of spray painters and panel beaters work together in our fully equipped paint shop to repair and paint anything small or large.



### Detailing

Any equipment that is hired out at PremiAir will undergo thorough checks and final testing to make sure everything is in place. Additionally, all equipment is washed and tyre shined as a minimum before leaving our premises. PremiAir takes huge pride in the presentation of its equipment.



### Installations

PremiAir services can also provide air line, compressor and generator installation, making sure your work is up and running and hassle free. Our service team has the resources and years of experience to handle any installation work you may need.



Notes



# PremiAir *Racing*

## Top Fuel Dragster



**PremiAir Hire** is proud to be the major sponsor of a Top Fuel Dragster piloted by the owner himself Peter Xiberras!

2014 saw the debut of Peter into Top Fuel Drag Racing into the 400 Thunder Australian Professional Dragracing Series.

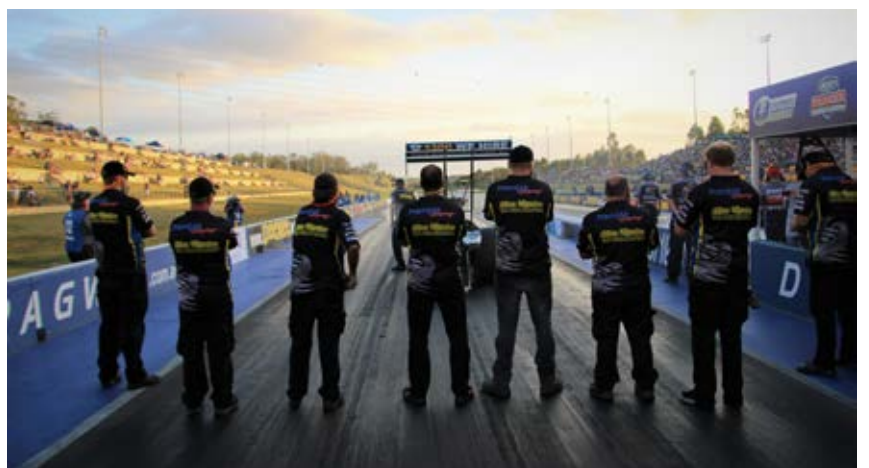
The car can accelerate to 160 km/h in just 0.8 seconds making it the fastest accelerating vehicle on the planet!

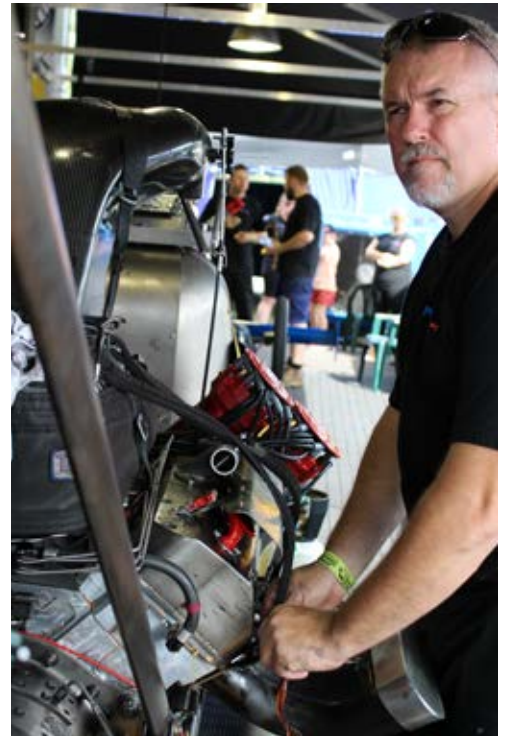




On the track and in the workplace, Peter's commitment to getting the job done is unparalleled. With the support of his tuner/team manager Tim Adams and the PremiAir Racing team, PremiAir Racing has very quickly developed into a very competitive team who have already shaken up the top fuel drag racing scene. So far the team's fastest pass on a 1/4 mile track is 4.647 seconds (3.932 to 1000ft) with a top speed of 518 km/h (324 mph)!

Since the 2014 debut, the PremiAir Racing team has made 4 event podium finishes with runners up in 2014 Nationals at Sydney Dragway, 2016 Nitro Champs at Sydney Dragway, 2016 East Coast Thunder at Sydney Dragway and 2017 New Year Thunder at Willowbank Raceway. The team is looking forward to the seasons ahead, pushing to make faster times than ever!





## Length:

1 inch	=	2.54 cm	1 m	=	1.094 yards
1 cm	=	0.394 inches	1 mile	=	1.609 kms
1 yard	=	0.914 m	1 km	=	0.621 miles

## Area:

1 inch <sup>2</sup>	=	6.452 cm <sup>2</sup>	1 m <sup>2</sup>	=	1.196 yards <sup>2</sup>
1 cm <sup>2</sup>	=	0.455 inches <sup>2</sup>	1 acre	=	0.405 hectares
1 m <sup>2</sup>	=	10.764 feet <sup>2</sup>	1 hectare	=	2.471 acres
1 foot <sup>2</sup>	=	0.093 m <sup>2</sup>	1 mile <sup>2</sup>	=	2.590 kms <sup>2</sup>
1 yard <sup>2</sup>	=	0.836 m <sup>2</sup>	1 km <sup>2</sup>	=	0.386 miles <sup>2</sup>

## Volume:

1 foot <sup>3</sup>	=	0.028 m <sup>3</sup>	1 m <sup>3</sup>	=	1000 Litres
1 m <sup>3</sup>	=	35.315 feet <sup>3</sup>	1 foot <sup>3</sup>	=	16.387 Litres
1 yard <sup>3</sup>	=	0.765 m <sup>3</sup>	1 gallon (US)	=	3.785 Litres
1 m <sup>3</sup>	=	1.308 yards <sup>3</sup>			

## Weight:

1 ounce	=	28.350 grams	1 kilogram	=	2.205 pounds
1 gram	=	0.0353 ounces	1 ton (US)	=	907.185 kilograms
1 pound	=	0.454 kilograms	1 ton (US)	=	2,000 pounds

## Energy - 3 Phase kVA

1 kVA	=	1.39 amps
1 amp	=	0.719 kVA

## Single Phase kVA

1 kVA	=	4.2 amps
-------	---	----------



# PremiAir Hire



Victoria

## Melbourne

73 Radnor Drive, Deer Park, VIC 3023  
1300 WE HIRE or (03) 9219 7404  
[melbourne@premiair.net.au](mailto:melbourne@premiair.net.au)  
Fax: (03) 8358 4048

ACT

## Canberra

3/23-27 Sheppard Street, Hume, ACT 2620  
1300 WE HIRE or 0423 420 013  
[canberra@premiair.net.au](mailto:canberra@premiair.net.au)  
Fax: 1300 661 898

SA

## Adelaide

7 Mill Court, Kilburn SA 5084  
1300 WE HIRE or (08) 8360 3300  
[adelaide@premiair.net.au](mailto:adelaide@premiair.net.au)

New South Wales

## PremiAir Hire Head Office

26 Clay Place, Eastern Creek, NSW 2766  
1300 WE HIRE or (02) 8818 1100  
[info@premiair.net.au](mailto:info@premiair.net.au)  
Fax: (02) 9620 1162

## Huntingwood

46 Huntingwood Drive, Huntingwood, NSW 2148  
1300 WE HIRE or (02) 9830 8200  
[huntingwood@premiair.net.au](mailto:huntingwood@premiair.net.au)

## Newcastle

Unit 8/14 Yangan Place, Beresfield NSW 2322  
1300 WE HIRE or (02) 4928 5302  
[newcastle@premiair.net.au](mailto:newcastle@premiair.net.au)  
Fax: (02) 4928 5399

## Parkes

2-10 Alluvial Street, Parkes, NSW 2870  
1300 WE HIRE or (02) 6861 1001  
[parkes@premiair.net.au](mailto:parkes@premiair.net.au)  
Fax: (02) 6862 4967

## Wollongong

49-53 Five Islands Road, Port Kembla, NSW 2505  
1300 WE HIRE or (02) 4255 2500  
[wollongong@premiair.net.au](mailto:wollongong@premiair.net.au)  
Fax: (02) 4274 3812

Queensland

## Brisbane

46 Colebard St East, Archerfield, QLD 4110  
1300 WE HIRE or (07) 3277 8099  
[brisbane@premiair.net.au](mailto:brisbane@premiair.net.au)  
Fax: (07) 3277 8977

## Chinchilla

249 Zeller Street, Chinchilla, QLD 4413  
1300 WE HIRE or (07) 4668 9913  
[chinchilla@premiair.net.au](mailto:chinchilla@premiair.net.au)  
Fax: (07) 4669 1645

## Gladstone

25 Roseanna St, Gladstone, QLD 4680  
1300 WE HIRE or (07) 4978 4826  
[gladstone@premiair.net.au](mailto:gladstone@premiair.net.au)  
Fax: (07) 4978 4827



